

# Wall entry pipe bend 200

for district heating lines

## MSH Basic FUBO-FIX RB200 r800

Article no.: 3030499294, GTIN: 4052487244084

For the feeding in and sealing of district heating supply lines through the floor slab. Positioning with separately available clip system on the district heating installation fixture and combination with spiral hose system and sealing elements.



Picture may differ from selected product

## FACTS

### Scope of delivery:

- 1 piece Pipe bend Øi 200 mm
- 1 piece Wall sleeve Øi 200 mm, partially coated L = 650 mm

## Dimensions:

- Pipe bend radius: 1,000 mm

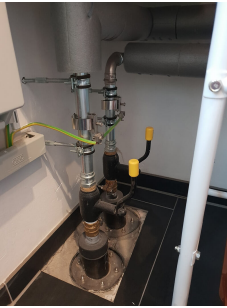
## Application range:

- DIN 18533 W1-E
- Waterproof concrete stress class 1, waterproof concrete stress class 2

## Material:

- PVC-U

## PICTURES



## ACCESSORIES REQUIRED



Installation fixture



Fastening bow