

System cover

with sleeve method for plastic spiral hoses

KES MA150 D

Article no.: 2125810000, GTIN: 4052487058070



- **Mechanical fixing (bayonet) and seal (clamping nut) act independently**
- **Bayonet system with return lock and locking screw connection (for protection against automatic opening)**

For use in wall insert and polymer flange HSI150 and for connecting plastic spiral hoses. The seal is created with the sleeve method, with a rubber sleeve being clamped onto both the system cover and the plastic spiral hose.



Picture may differ from selected product

FACTS

Advantages:

- Mechanically stable, elastic connection with system sleeve
- Sleeve method for flexible adaptation of the empty conduit length

Scope of delivery:

- 1 piece Sleeve with clamping straps

Properties:

- FHRK-certified
- For the duct connection we recommend using the spacer HSI AH40 to extend the centre distance when installing multiple HSI150 wall inserts



Material:

- System cover: polycarbonate
- Clamping nut: PC/PBT blend
- Sleeve: EPDM
- Clamping straps: W4

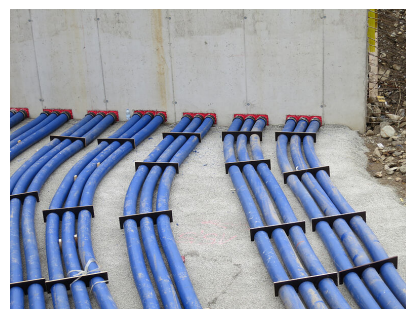
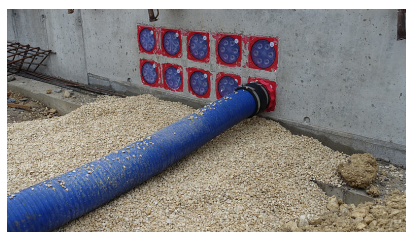
Tightness:

- gastight and watertight to 2.5 bar

FEATURES

Item: Systemdeckel

PICTURES



ACCESSORIES REQUIRED



Toolset for KES-M



Flexible socket wrench