

Insulated earthing entry

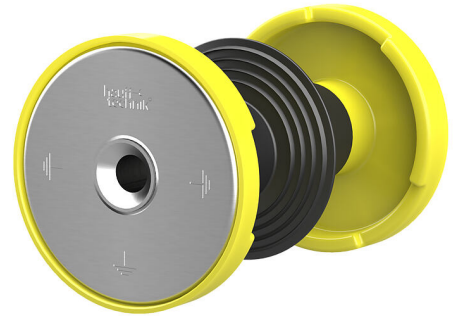
HEA IS M12/200

Article no.: 1710020156, GTIN: 4052487045384



- **Patented twist resistance provided by special contour of contact washer**

Specifically for station construction. Installed during formwork work. Earthing connections to the building can be made with the thread on both sides in the electrically isolated conductor core.



Picture may differ from selected product

FACTS

Advantages:

- Isolated earth for separate checking of earthing
- Water barrier for tightness with concrete
- Watertight M12 connection thread on both sides (blind hole)
- Resistant to corrosion
- Short-circuit-tested

Scope of delivery:

- Protective cover on both sides

Dimensions:

- Conductor core: round, Ø 25 mm
- Contact washer: Ø 72 mm
- Minimum wall thickness: 70 mm

Application range:

- Waterproof concrete stress class 1, waterproof concrete stress class 2

Material:

- Conductor core and contact washers: stainless steel V4A (AISI 316L)
- Protective cover: cellular rubber
- Electrical insulation: EPDM
- Water barrier: EPDM

Tests/Standards:

- To VDE 0101, EN 50522

FEATURES

wall thickness (mm):	200
Threaded bolt:	M12

PICTURES

