

Outer sealing element module 6

for single-line building entry systems basic variant 1

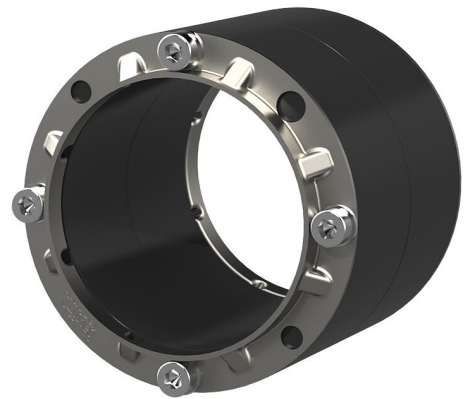
ESH PolySafe M6

Article no.: 1900400020, GTIN: 4052487051026



- **optical and tangible installation security due to integrated control opening**

For sealing in core drills for double walls/element walls. With a sealing width of 80 mm, module 6 is able to seal both the concrete formwork of the double wall/element wall and the in-situ concrete. This prevents rising water in the area between the element wall and the concrete filling from penetrating the core drill hole.



Picture may differ from selected product

FACTS

Advantages:

- Can be installed easily and quickly on-site

Dimensions:

- Core drill/wall sleeve ID: 99 - 103 mm
- Sealing width: 80 mm

Application range:

- Waterproof concrete stress class 1, waterproof concrete stress class 2

Material:

- Rubber: EPDM
- Press plates: stainless steel V2A (AISI 304L)
- Screws and washers: stainless steel V2A (AISI 304L)