

Double wall insert

adjustable length, for setting in concrete

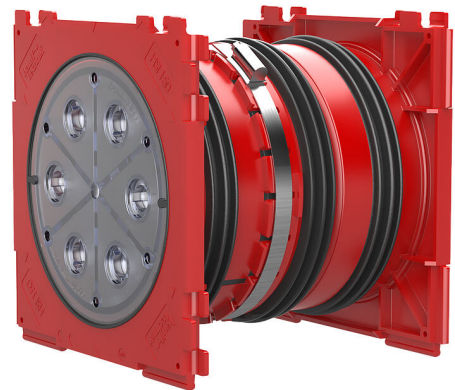
HSI150 1x1 K2 Varia 470-575

Article no.: 3030300087, GTIN: 4052487220095



- **Stepless adjustment to the required wall thickness on site**
- **In total, three spray applications of 3-ribbed seal are applied to create a pressure-tight seal with the concrete**
- **Quality mark on both sides: sealed ex works. Option to check for accidental or unauthorised opening of the closing cover**

For the gastight and watertight connection on both sides of system seals for cables and cable ducts and maximum flexibility for subsequent use.



Picture may differ from selected product

FACTS

Advantages:

- System seal can be connected on both sides (e.g. cable duct connection and cable seal)
- Packages can be created with frame connection system on site
- Can be used in all types of wall including element constructions

Scope of delivery:

- 2 pieces pressure-tight closing covers
- 1 piece Hex key with integrated torque limitation



Dimensions:

- Frame dimensions: 220x 220 mm
- Centre distance: 210 mm
- Minimum wall thickness: 200 mm

Application range:

- Waterproof concrete stress class 1, waterproof concrete stress class 2

Material:

- Wall insert: ABS with TPE 3-ribbed seal
- Adapter pipe: PVC
- Clamping strap: Steel St sn (W1)
- Closing cover: ABS with TPE seal

Tightness:

- gastight and watertight to 2.5 bar
- radon tight

FEATURES

wall thickness (mm):	470-575
Packing unit:	4

PICTURES

