

Double wall insert

for setting in concrete

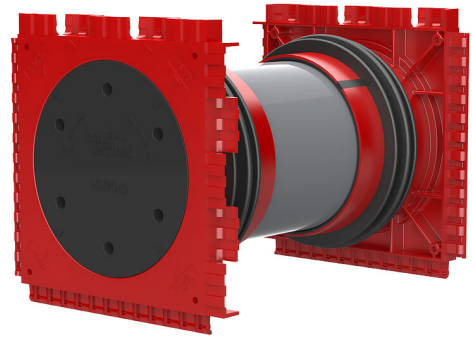
HSI90 1x1 K2/240

Article no.: 3030449822, GTIN: 4052487242097



- **3-ribbed seal is sprayed on to create pressure-tight seal with concrete**

For the gastight and watertight connection on both sides of system covers for cables and cable ducts and maximum flexibility for subsequent use.



Picture may differ from selected product

FACTS

Advantages:

- System seal can be connected on both sides (e.g. cable duct connection and cable seal)
- Packages can be created with frame connection system, delivery ex works

Scope of delivery:

- 2 pieces pressure-tight closing covers

Dimensions:

- Frame dimensions: 145x 145 mm (per wall insert)
- Centre distance: 135 mm
- Minimum wall thickness: 100 mm

Application range:

- Waterproof concrete stress class 1, waterproof concrete stress class 2



Material:

- Wall insert: ABS with TPE 3-ribbed seal
- Adapter pipe: PVC
- Closing cover: ABS with EPDM seal

Tightness:

- gastight and watertight to 2.0 bar
- radon tight

FEATURES

wall thickness
(mm): 240

PICTURES

