

# Double wall insert

## for setting in concrete

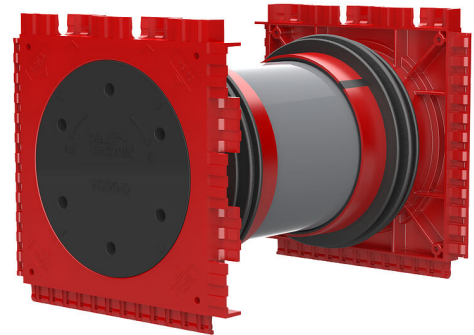
### HSI90 1x1 K2/500

Article no.: 3030440644, GTIN: 4052487242073



- **3-ribbed seal is sprayed on to create pressure-tight seal with concrete**

For the gastight and watertight connection on both sides of system covers for cables and cable ducts and maximum flexibility for subsequent use.



Picture may differ from selected product

## FACTS

### Advantages:

- System seal can be connected on both sides (e.g. cable duct connection and cable seal)
- Packages can be created with frame connection system, delivery ex works

### Scope of delivery:

- 2 pieces pressure-tight closing covers

### Dimensions:

- Frame dimensions: 145x 145 mm (per wall insert)
- Centre distance: 135 mm
- Minimum wall thickness: 100 mm

### Application range:

- Waterproof concrete stress class 1, waterproof concrete stress class 2



## Material:

- Wall insert: ABS with TPE 3-ribbed seal
- Adapter pipe: PVC
- Closing cover: ABS with EPDM seal

## Tightness:

- gastight and watertight to 2.0 bar
- radon tight

## FEATURES

wall thickness  
(mm): 500

## PICTURES

