

Single wall insert

for setting in concrete

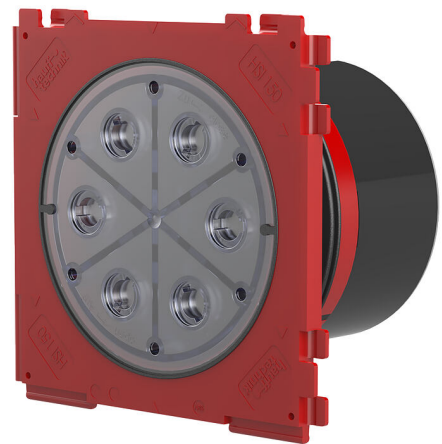
HSI150 1x1 K/90

Article no.: 3030303640, GTIN: 4052487243902



- **Double reliability thanks to closing cover and safety cover for wall thicknesses from 70 to 150 mm**
- **3-ribbed seal is sprayed on to create pressure-tight seal with concrete**
- **Quality mark: sealed ex works. Option to check for accidental or unauthorised opening of the closing cover**

For the gastight and watertight connection on one side of system seals for cables or cable ducts and a high level of flexibility for subsequent use.



Picture may differ from selected product

FACTS

Advantages:

- System seal can be connected (e.g. cable duct connection or cable seal)
- Packages can be created with frame connection system on site

Scope of delivery:

- 1 piece Pressure-tight closing cover



Dimensions:

- Frame dimensions: 220x 220 mm
- Centre distance: 210 mm
- Minimum wall thickness: 70 mm

Properties:

- FHRK-certified
- Safety cover for tapping in
- Entry remains sealed even after the closing cover has been removed

Application range:

- Waterproof concrete stress class 1, waterproof concrete stress class 2

Material:

- Wall insert: ABS with TPE 3-ribbed seal
- Adapter pipe with safety cover: ABS or for wall thickness > 150 mm: PVC
- Closing cover: ABS with TPE seal

Tightness:

- gastight and watertight to 2.5 bar
- radon tight

FEATURES

wall thickness
(mm): 90

PICTURES

