

System cover

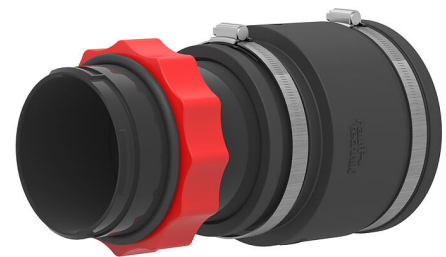
with sleeve method for smooth cable ducts

HSI90 MA110 GR

Article no.: 2206040020, GTIN: 4052487060998



- **Mechanical fixing (bayonet) and seal (clamping nut) act independently**
- **Bayonet system with return lock and locking screw connection (for protection against automatic opening)**



Picture may differ from selected product

For use in wall insert and aluminium flange HSI90. For connecting smooth cable ducts. The seal is created with the sleeve method, with a rubber sleeve being clamped onto both the system cover and the duct with clamping straps.

FACTS

Advantages:

- Mechanically stable, elastic connection with system sleeve

Scope of delivery:

- 1 piece Sleeve with clamping straps

Material:

- System cover: polycarbonate
- Clamping nut: PC/PBT blend
- Sleeve: EPDM
- Clamping straps: W4

Tightness:

- gastight and watertight to 0.5 bar

FEATURES

Pipe
OD: 110