

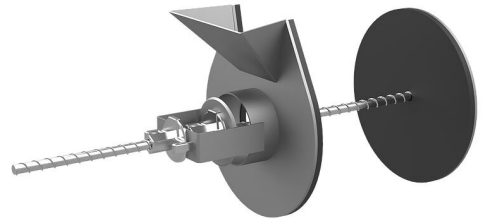
# Compound injection unit

## for the wet installation of wall sleeves

### VFV150

Article no.: 1591000123, GTIN: 4052487133692

Used for retrofit wet installation of wall sleeves (SFR) in core drills or break-throughs.



Picture may differ from selected product

## FACTS

### Advantages:

- Can be used in buildings with sealing to DIN 18195 Part 4
- Can be installed projecting on the outside in order to accommodate a channel
- Easy adjustment to the wall thickness on site

### Application range:

- DIN 18533 W1-E

## FEATURES

Suitable for:	SFR150/X
Core drilled hole/wall duct ID (mm):	250 - 300