

Membrane injection system

for buildings with a basement

MIS40D 2x5-7 BL1000 Set10

Article no.: 3030380163, GTIN: 4052487229920



- **Universal building entry with membrane injection system for drill holes in the most common types of wall**
- **Controlled ejection of resin through slit membrane hose**
- **Sealing lips ensure gentle seal for media lines**

For reliable sealing of fibre optic cables and telecommunications lines.



Picture may differ from selected product

FACTS

Advantages:

- Quick to assemble in just a few minutes
- Not necessary to restore basement seal to DIN 18533

Scope of delivery:

- 1 packing unit:
- 10 pieces MIS40
- 10 pieces wall terminator element
- 10 pieces 2-component resin RESINATOR, 150 ml
- 1 piece quick tensioning device MIS40 SVS

Dimensions:

- For core drills ID: 40 - 50 mm

Application range:

- DIN 18533 W1-E, DIN 18533 W2.1-E
- Waterproof concrete stress class 1, waterproof concrete stress class 2

Material:

- Flange and counter-bearing
- Resin filler hose: PE
- Sealing tape: butyl
- Pipe: PVC-U
- Wall terminator element: Flame-retardant polycarbonate
- Fast arrangement fixture: glass fibre reinforced polyamide/ABS

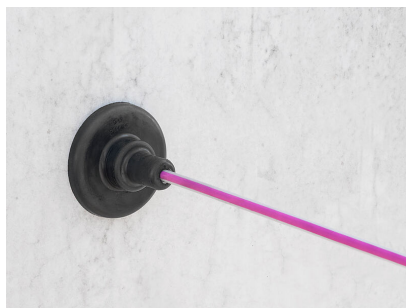
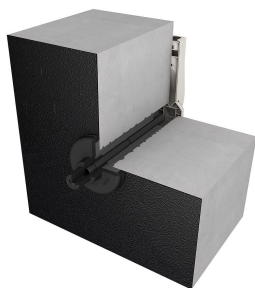
Tightness:

- gastight and watertight to 1.0 bar

FEATURES

| | |
|-----------------------------------|-----------|
| Number of cables/medium: | 2 |
| Suitable for medium pipe OD (mm): | 5 - 7 |
| Overall lenght (mm): | 1000 |
| wall thickness (mm): | 200 - 900 |

PICTURES



ACCESSORIES REQUIRED



Cartridge gun



Quick tensioning device