

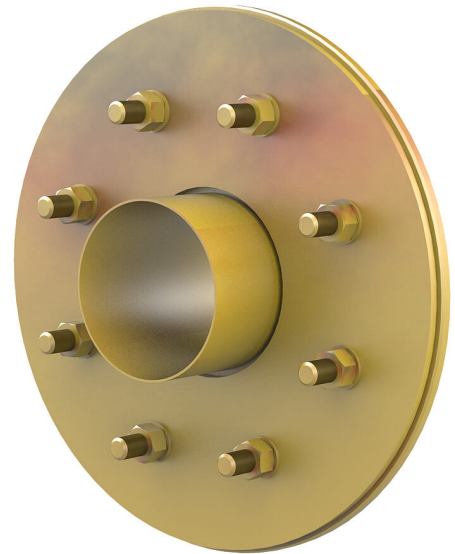
# Fixed/loose flange wall sleeve galvanised

for retrofit dowelling for black tank

FLFA1x150/80/0 DIN18533 St-A3C

Article no.: 3030353438, GTIN: 4052487226912

For dowelling with wall sleeves, core drills or breakthroughs.



Picture may differ from selected product

## FACTS

### Scope of delivery:

- 1 piece Fixed/loose flange wall sleeve
- Fastenings for concrete
- Nuts

### Dimensions:

- Standard upper length: 80 mm
- Design according to DIN 18533 includes: underground structural components
- Standard fixed flange  $\text{Ø}a$  equal to the relevant wall sleeve  $\text{Ø}i$  + approx. 330 mm (for one passage)

## Application range:

- DIN 18533 W1-E, DIN 18533 W2.1-E, DIN 18533 W2.2-E

## Material:

- Fixed/loose flange wall sleeve steel galvanised (gv)
- Fastenings: stainless steel V4A (AISI 316L)
- Nuts: Steel galvanised (gv)

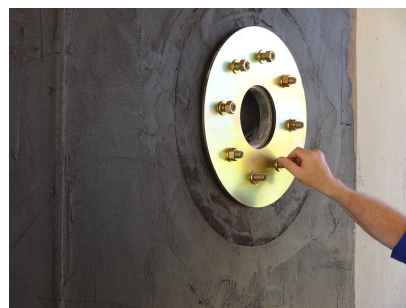
## Tightness:

- gastight and watertight

## FEATURES

Wall sleeve ID (mm) D1:	150
Fixed flange OD (mm) D2:	475
Loose flange OD (mm) D3:	465
Wall sleeve wall thickness (mm)	2
S:	

## PICTURES



# ACCESSORIES REQUIRED



Rubber inlays