

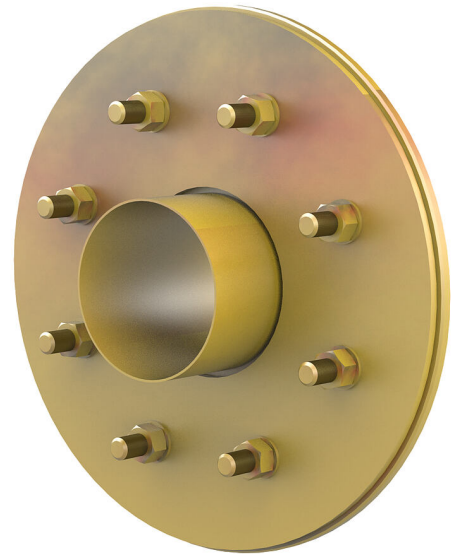
Fixed/loose flange wall sleeve galvanised

for retrofit dowelling for black tank

FLFA1x250/80/0 DIN18533 St-A3C

Article no.: 3030353454, GTIN: 4052487226905

For dowelling with wall sleeves, core drills or breakthroughs.



Picture may differ from selected product

FACTS

Scope of delivery:

- 1 piece Fixed/loose flange wall sleeve
- Fastenings for concrete
- Nuts

Dimensions:

- Standard upper length: 80 mm
- Design according to DIN 18533 includes: underground structural components
- Standard fixed flange Øa equal to the relevant wall sleeve Øi + approx. 330 mm (for one passage)

Application range:

- DIN 18533 W1-E, DIN 18533 W2.1-E, DIN 18533 W2.2-E

Material:

- Fixed/loose flange wall sleeve steel galvanised (gv)
- Fastenings: stainless steel V4A (AISI 316L)
- Nuts: Steel galvanised (gv)

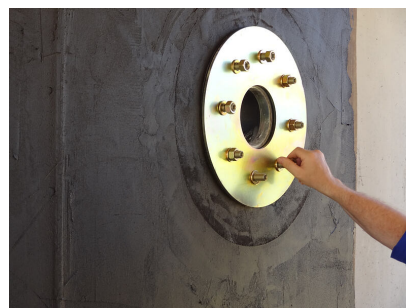
Tightness:

- gastight and watertight

FEATURES

Wall sleeve ID (mm) D1:	250
Fixed flange OD (mm) D2:	580
Loose flange OD (mm) D3:	570
Wall sleeve wall thickness (mm)	2
S:	

PICTURES



ACCESSORIES REQUIRED



Rubber inlays