

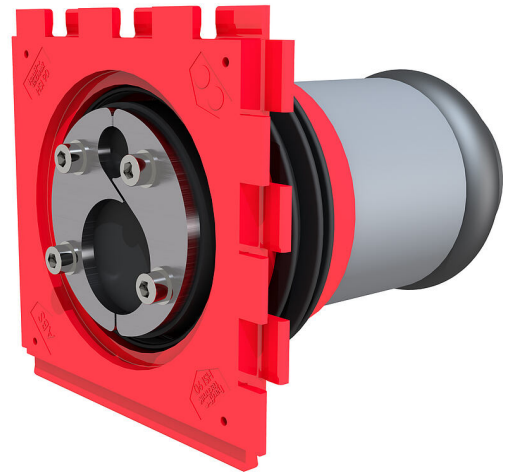
House connection set for setting in concrete

Hausanschluss-Set K55/250

Article no.: 2210000101



- **The K55 empty conduit can be easily inserted, does not shrink, requires 2" steel pipe**
- **Pressure-tight closing cover ensures it is gas and watertight even after the empty conduit has been connected**
- **3-ribbed seal is sprayed on to create pressure-tight seal with concrete**



Picture may differ from selected product

For sealing all common communications cables (inside) and connecting cable ducts (outside).

FACTS

Advantages:

- Optimum bending radius because the press seal is installed offset in the pipe

Scope of delivery:

- Single wall insert with plug-in-socket HSI90 KCH K55/X
- Press seal HRD80 SGI 1x4,6-10,6 1x10-33 b40 A2/EPDM55

Dimensions:

- Frame dimensions: 145x 145 mm (per wall insert)
- Sealing width: 40 mm
- For 2 cables/pipes with 1x Ø 4.6-10.6 mm and 1x Ø 10-33 mm

Application range:

- Waterproof concrete stress class 1, waterproof concrete stress class 2

Material:

- Wall insert: ABS with EPDM 3-ribbed seal
- Adapter pipe: PVC
- Closing cover: ABS with EPDM seal
- Pipe cover: PE or sleeve cap: PVC
- Press plates, screws and nuts: rust-free stainless steel V2A (AISI 304L)
- Rubber: EPDM

Tightness:

- gastight and watertight to 0.5 bar

FEATURES

:	72
wall thickness (mm):	250

PICTURES

